



LOT B, PICKARDS MEADOW ROAD CHAPEL HILL

10 acres at the base of Pickard Mountain 5 miles west of Carrboro. Wooded land with huge old trees. Level lot with lovely homesite overlooking neighboring farm & pond. Very private and protected - surrounded by large parcels. Come join the neighborhood!

\$285,000

MLS # 1791298



Listing Agent, Gary Phillips

444-1075 cell

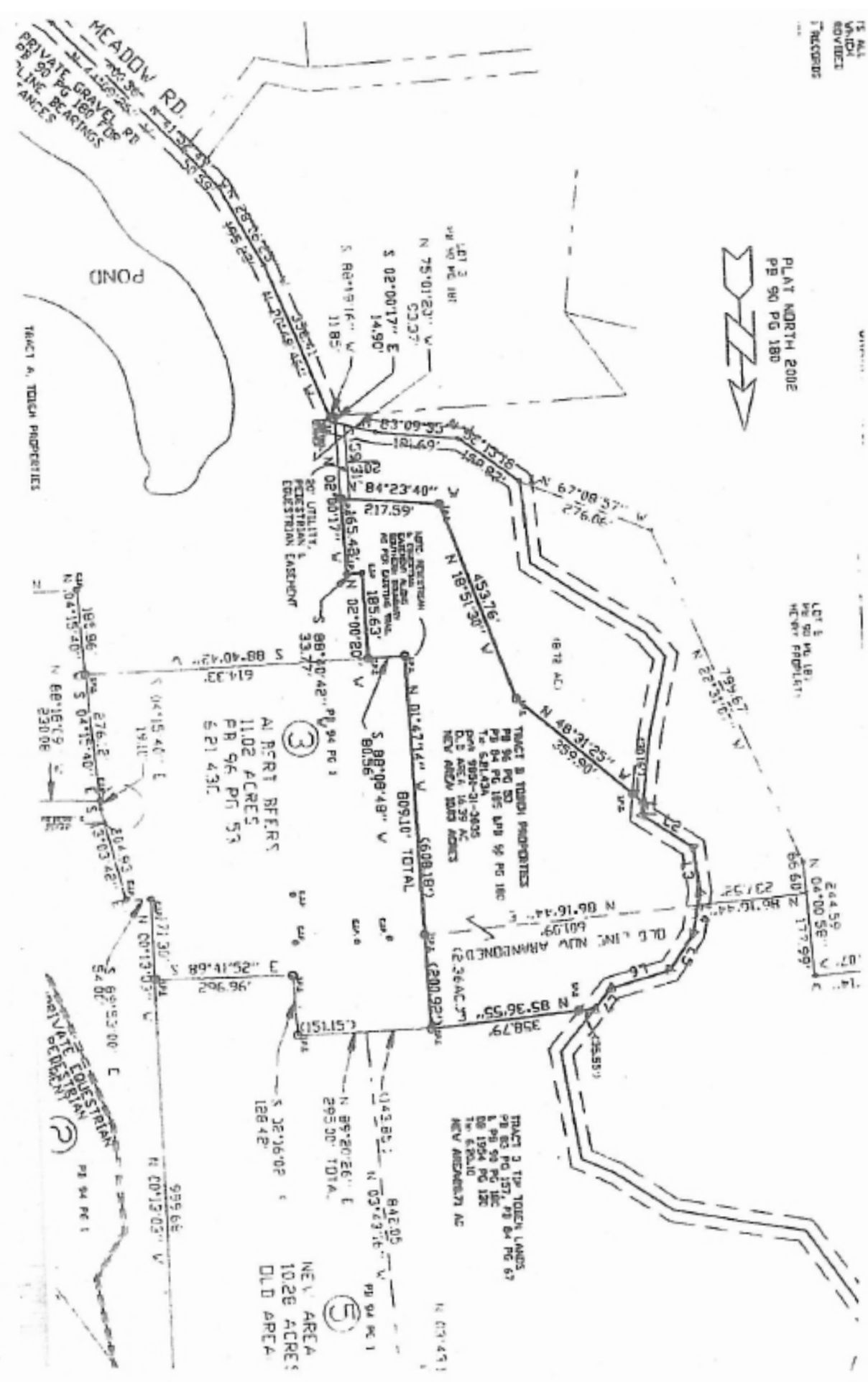
929-5658 office

gary@weaverstreetrealty.com



Hwy 54 W to right on Bethel-Hickory Grove Church Rd
to left on Jo Mac to right on Pickards Mountain Road.

PLAT NORTH 2002
PG 90 PG 180



MEADOW RD.
PRIVATE GRAVEL
37' PLANE BEARING
60' PLANE BEARING

POND

TRACT A. TOUCH PROPERTIES

TRACT B. TOUCH PROPERTIES
PG 96 PG 80
PG 84 PG 185
PG 94 PG 180
PG 96 PG 180
PG 96 PG 180
PG 96 PG 180
NEW AREA 10.28 ACRES

TRACT C. TOUCH LANDS
PG 80 PG 157, PG 84 PG 67
PG 90 PG 120
PG 1904 PG 120
PG 1904 PG 120
NEW AREA 10.28 AC

TRACT D. TOUCH PROPERTIES
PG 96 PG 80
PG 84 PG 185
PG 94 PG 180
PG 96 PG 180
PG 96 PG 180
NEW AREA 10.28 ACRES

TRACT E. TOUCH PROPERTIES
PG 96 PG 80
PG 84 PG 185
PG 94 PG 180
PG 96 PG 180
PG 96 PG 180
NEW AREA 10.28 ACRES

3

5

NEW AREA
10.28 ACRES
OLD AREA

PRIVATE GRAVEL
37' PLANE BEARING
60' PLANE BEARING